

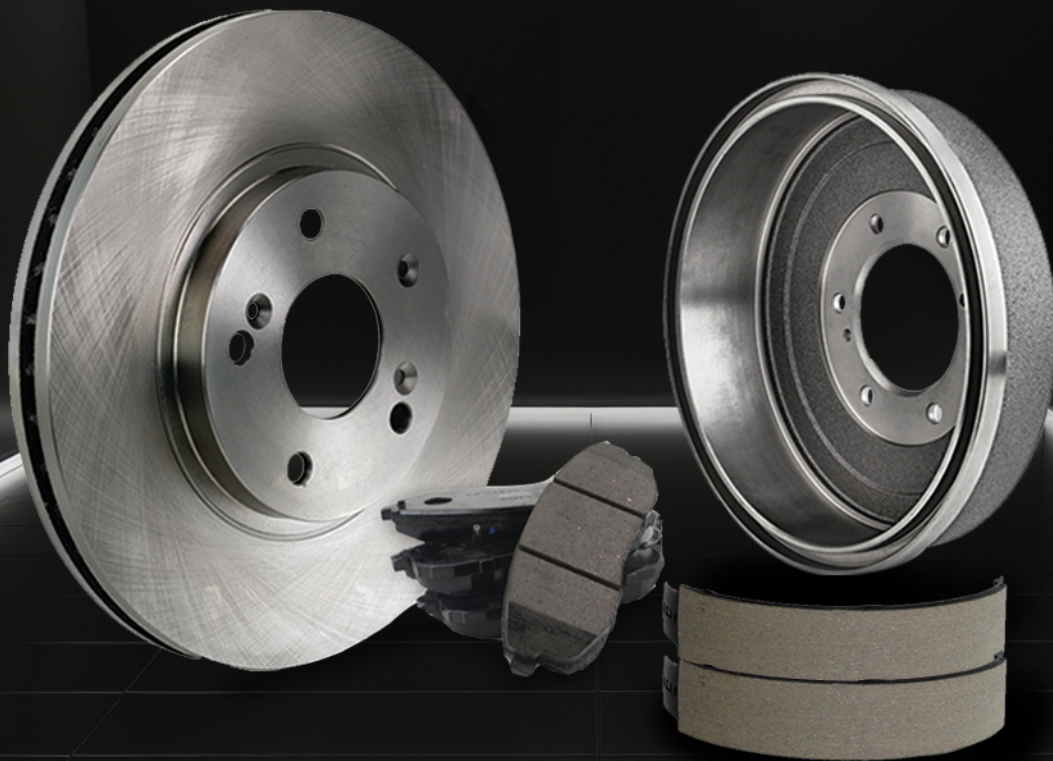


**VALUE
ADVANTAGE®**

BOOST YOUR VEHICLE'S PERFORMANCE WITH OUR
HIGH-QUALITY BRAKE SYSTEM!



Value Advantage® products offer performance, durability and efficiency for your vehicles.



Covered by a 36-month/36,000-mile brake parts warranty
(whichever occurs first)*

*Images shown for illustrative purposes only. For complete information concerning warranty coverage, conditions, limitations, and exclusions, contact your Nissan dealer and read the product manufacturer's warranty information.



**VALUE
ADVANTAGE®**

VALUE TIPS

How do we optimize the function of the Braking System?

The parts are subject to technical control. Rear drum brakes have an expected lifespan of between 50,000 and 90,000 miles. Don't exceed these limits without replacing the rear drum brakes. It's recommended to clean and remove dust after 40,000 miles. Keep in mind that brake fluid ordinarily lasts for 2 years.

BRAKE DRUMS

The drum brake is a common system for rear brakes in urban vehicles. It works by using two cylinders that, when receiving pressure from the brake fluid, push the shoes against the inside of the drum, creating friction to stop the vehicle.

Our benefits

- **DEALER-INSTALLATION PROCESS**
Ready to install without any additional equipment**
- **ORIGINAL EQUIPMENT REPLACEMENT**
Designed and engineered to Nissan Original Equipment specifications for fit, form, and function
- **NOISE REDUCTION**
Built to minimize noise and vibration, for smooth and quiet braking
- **BALANCE**
Validated for proper balance to minimize vibration
- **PRECISION**
100% precision turned and balanced for smoother stops

Symptoms indicating a change

- If you experience shaking in the vehicle or in the brake pedal when braking, or excessive play in the handbrake lever
- If braking is noisy, and you hear thuds or grinding, it could indicate an adjustment problem
- If there's a difference in braking between the two sides of the vehicle, it could be due to a brake fluid leak. This might be visible around the tires or from a drop in the reservoir's fluid level



We recommend replacing the Brake Shoes along with the Drums for a complete repair

*Images shown for illustrative purposes only. For complete information concerning warranty coverage, conditions, limitations, and exclusions, contact your Nissan dealer and read the product manufacturer's warranty information. **Some accessories may require installation by dealer at time of accessory purchase, which is not included in the MSRP. Dealer sets actual price.



**VALUE
ADVANTAGE®**

BRAKE PADS

How do you know if Brake Pads are worn out?

To know if your brake pads are worn, pay attention to these signs:

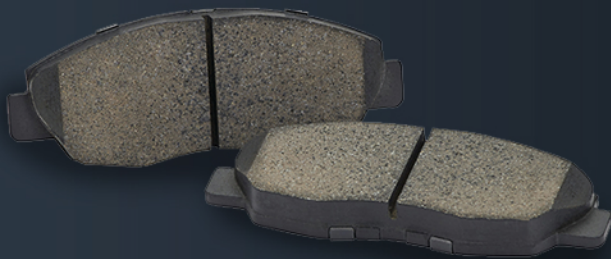
- If the brake feels hard when pressed, the pads may be hardened, greasy, or crystallized.
- If there's vibration when braking on the highway, the rotors may be warped and need replacement.
- A screeching noise indicates pad wear. Ignoring it could damage the rotors. If the brake pedal sinks more than normal, there may be a leak, or the pads are worn out completely.
- If braking is less effective or the stopping distance increases, it's time to change the pads.

How you could help extend Brake Pad life

Brake discs and pads are worn items. It's important to adopt progressive and efficient driving, avoiding sudden braking, which accelerates wear. It's also crucial to check their condition every 15,000 to 20,000 miles, as front pads tend to wear out faster than rear ones. Prevention and regular maintenance are key to help extend brake life.

Our benefits

- **MATERIAL**
Ceramic
- **FRICITION MATERIAL**
Available in NAO-ceramic formulas for optimal performance
- **SUPERIOR NOISE DAMPENING**
Provided by multi-layered shim technology
- **RUST PREVENTION**
Equipped with an oxide-inhibiting coating to help prevent rust
- **SYNTHETIC LUBRICANT**
Included in all applications to reduce friction at sliding contact points
- **SLOTTING AND CHAMFER DESIGN**
Ensures quick and easy installation
- **HARDWARE**
Wear sensors and caliper bracket liners included



We have enhanced and redesigned our rear Brake Pads for the Rogue T32 with anti-corrosion stainless steel clips to reduce clicking noise

*Images shown for illustrative purposes only. For complete information concerning warranty coverage, conditions, limitations, and exclusions, contact your Nissan dealer and read the product manufacturer's warranty information. **Some accessories may require installation by dealer at time of accessory purchase, which is not included in the MSRP. Dealer sets actual price.



**VALUE
ADVANTAGE®**

BRAKE ROTORS

How do you know if Brake Rotors are damaged?

Pulsations or vibrations in the vehicle or the brake pedal. You may even feel this vibration or pulsation in the steering wheel. If you experience this, it could indicate a rotor thickness variation issue and should be checked.

How you could help extend Brake Rotors life

To help maximize the lifespan of brake rotors, it's crucial to use the one-foot method to operate the accelerator and brake pedals. Driving with one foot on each pedal, even unconsciously, can cause premature pad wear and overheat the rotors, affecting their durability and fuel efficiency.

Our benefits

- **READY TO INSTALL**
Ready to install without any cleanup**
- **BALANCED**
Properly balanced to minimize vibration and noise
- **RUST PROTECTION**
Fully coated to help prevent rust and corrosion
- **STRUCTURAL INTEGRITY**
Meets SAE Tensile Strength Standards for maximum durability and service life



We implemented full Rotor coating to help prevent corrosion, allowing the rotor to last longer

*Images shown for illustrative purposes only. For complete information concerning warranty coverage, conditions, limitations, and exclusions, contact your Nissan dealer and read the product manufacturer's warranty information. **Some accessories may require installation by dealer at time of accessory purchase, which is not included in the MSRP. Dealer sets actual price.



**VALUE
ADVANTAGE®**

BRAKE SHOES

Brake shoes typically need replacement every 30,000–35,000 miles in urban driving, or every 80,000 miles or more in less demanding situations, such as highway driving. It's best to replace brake shoes before they wear down too much, as this can cause metal-on-metal friction in the brake system.

When should you replace them?

Replace the brake shoes if you hear loud noises while braking, such as squealing, screeching, or grinding.

These sounds are due to the contact between the brake shoes and the drums.

Other signs of wear include dark friction surfaces and a burning smell.

Check your owner's manual for the recommended brake replacement intervals.

Our benefits

- **DURABILITY**
Constructed with premium new steel and dipped coating for corrosion resistance
- **OE REPLACEMENT**
Designed and engineered to Nissan Original Equipment specifications for precise fit, form, and function
- **FRICION MATERIAL BONDING**
Adhesive bonding for reliable performance

