



VALUE
ADVANTAGE®



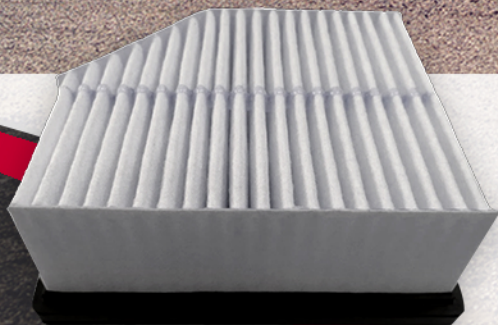
For support or information, contact us at ValueAdvantage@nissan-usa.com. Our parts should be changed according to Owner's Manual. Images for illustrative purposes only. For our customers, additional warranty documents will be provided at the time of purchase.

ENGINE PROTECTION FOR YOUR VEHICLE'S PERFORMANCE

NEW VALUE ADVANTAGE® ENGINE AIR FILTER

OUR FEATURES

- Our Value Advantage® **AF54M-6RC1J-NW** Engine Air Filter fits for the engines: **PR25DD** and **KR15DDT**, reducing the number of SKUs needed to service the **Rogue T33**
- Meets the Nissan Design Standards
- It has the same **dust retention** capacity as the Nissan Original Equipment filter
- **Pressure Drop:** Helps reduce fuel consumption by maintaining proper airflow to the engine
- **Filtration Efficiency:** Helps provide effective filtration at Nissan Original Equipment level





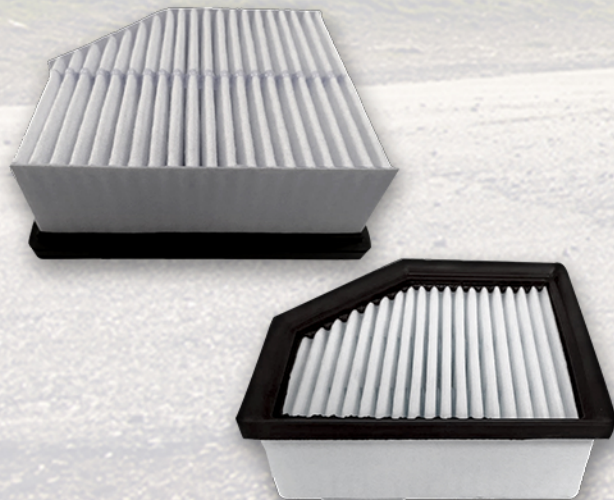
**VALUE
ADVANTAGE®**

VALUE TIPS

STEPS TO CHANGE THE **ENGINE AIR FILTER**

1. **Open the hood and check the condition of the engine filter housing**
Inspect the housing to ensure it's not damaged or excessively dirty.
2. **Disconnect the clips and open the housing lid**
Locate and unclip the securing clips. Lift the lid to access the air filter.
3. **Remove the old air filter**
Carefully take out the air filter, ensuring no debris falls into the engine compartment.
4. **Insert the new air filter into the housing**
Place the new filter securely in the housing, ensuring it fits properly and aligns with the airflow direction.
5. **Close the housing lid and reconnect the clips**
Replace the lid and secure it by reattaching the clips firmly.

Note: If the clips are difficult to connect, stop the assembly and check the alignment to ensure they are properly fitted.



DID YOU KNOW...?

Not replacing the engine air filter could:

- Increase fuel consumption: A clogged filter may limit airflow, leading to higher fuel usage
- Reduce engine performance: Insufficient airflow could decrease engine power and acceleration
- Cause engine damage: Dust and debris may enter the engine and cause internal wear on critical components